

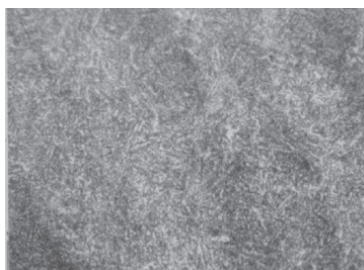
S7 Mold Quality® Characteristics: High Polishability

Microcleanliness

	Worst-Field Inclusion Ratings (ASTM E-45 - Method A)							
	Type A (sulfide)		Type B (alumina)		Type C (silicate)		Type D (globular oxide)	
	Thin	Heavy	Thin	Heavy	Thin	Heavy	Thin	Heavy
Specification	0,5	0,5	1.0	1.0	0,5	0,5	1.5	1.5

Microcleanliness is in accordance to international standards (North American Die Casting Association (NADCA) requirement for premium grades)

Structural Homogeneity



Microstructure in accordance with international standards (NADCA/SEP)

SUPER 7 MQ®'s high level of microcleanliness and structural homogeneity give it very good polishability for molding applications.

Benefits of High Polishability

- ♦ Reduces or eliminates surface defects on the mold and therefore produces a cleaner, smoother mold (reduces orange peeling and pitting)
- ♦ Reduces or eliminates re-polishing